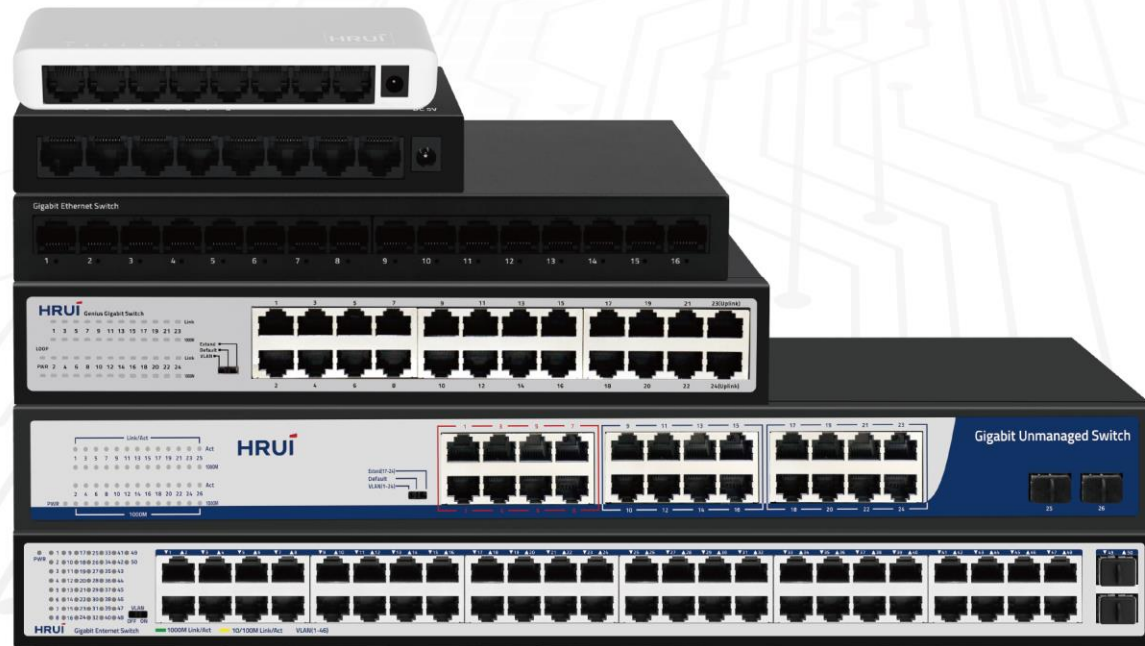
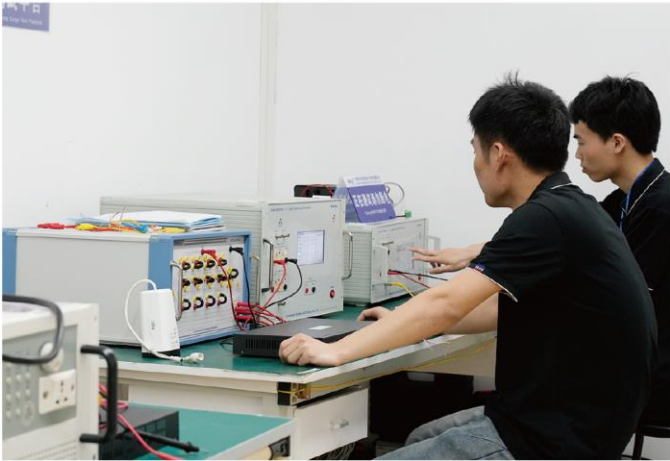


Gigabit Unmanaged/ Web-Managed Switch





R&D Advantage

We have a large technical service team composed of 40 engineers, can provide OEM/ODM product customization, software function customization and other technical support. We are able to provide remote technical operation support within 24 hours, after-sales technical support such as real-time technical issues, video conferences, etc.



>60

SKUs developed per year



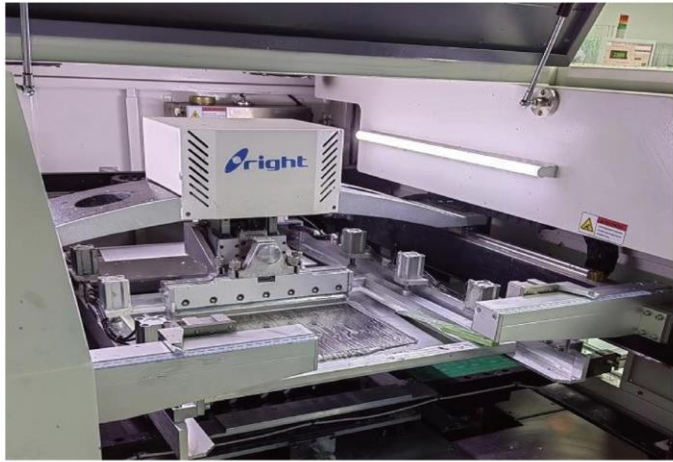
>40

R&D personnel



>10 years

Development experience



Factory View

HRUI has achieved significant manufacturing environment advantage and a complete industrial layout after years of hard work and precipitation.



2013

Company established



≥300

Employees



12000m²

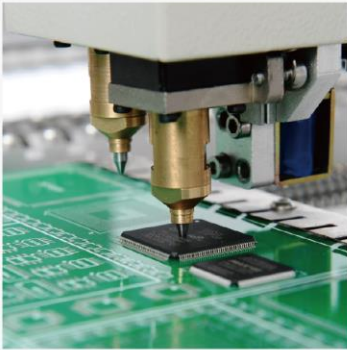
Industrial Plant



≥250K pcs

Production per Month

Why choose HRUI ?



Product Quality and Reliability

With Advanced Manufacturing Processes and quality testing all in Shenzhen, HRUI is being the approved vendor supplying switches to many OEM/ODM/JDM brand customers around the world.



Factory Capability and Capacity

ISO9001/14001/45001 Manufacturing Lines; Capacity of over 2 Million pcs of switches per year. Qualified by lots of world famous brand customers, and audited by CE/Anatel/UL.



Networking Product Development

>40 R&D personnel, >60 Switch SKUs developed per year, >10 years of experiences in developing networking switches and firmwares.



Can Pass Regulatory Certificates

Capable of getting major regulatory certificates (CE, FCC,UL, CB, KC, ANATEL, etc.)

Gigabit Web Managed Ethernet Switch



			
Model	HR-SWGW2082S	HR-SWGW20162S	HR-SWGW20242S
Port Rate	8*GE + 2*1G SFP	16*GE + 2*1G SFP	24*GE + 2*1G SFP
Power Input	AC 100-240V	AC 100-240V	AC 100-240V
Bandwidth	20Gbps	36Gbps	52Gbps
MAC Address Table	8K	8K	8K
TCP/IP Layer	Web	Web	Web
Surge Protection	4KV	6KV	6KV
Product Size(mm)	220*161*44mm	440*205*44mm	440*205*44mm

Gigabit Web Managed PoE Switch



			
Model	HR-AFGW-82NS	HR-AFGW-162S	HR-AFGW-242S
Port Rate	8*GE PoE + 2*1G SFP	16*GE PoE + 2*1G SFP	24*GE PoE + 2*1G SFP
Total Power	120/150W	200/300W	300/400W
PoE Standard	IEEE802.3 af/at	IEEE802.3 af/at	IEEE802.3 af/at
Power Input	AC 100-240V	AC 100-240V	AC 100-240V
Bandwidth	20Gbps	36Gbps	52Gbps
MAC Address Table	8K	8K	8K
TCP/IP Layer	Web	Web	Web
Surge Protection	6KV	6KV	6KV
Product Size(mm)	270*180*44mm	440*205*44mm	440*280*44mm

10/100/1000M Ethernet Switch

				
Model	HR-SWG0050-M	HR-SWG0050+	HR-SWG0080	HR-SWG0080+
Port Rate	5*GE	5*GE	8*GE	8*GE
Power Input	DC 5V	DC 5V	DC 5V	DC 5V
Bandwidth	10Gbps	10Gbps	16Gbps	16Gbps
VLAN	/	/	/	/
250m Extend	/	/	/	/
Surge Protection	/	/	/	/
Product Size(mm)	87*54*23mm	92*51*21.5mm	138*78*25mm	145*60*21.5mm

10/100/1000M Ethernet Switch



			
Model	HR-SWG10160D-M	HR-SWG00160	HR-SWG10240D
Port Rate	16*GE	16*GE	24*GE
Power Input	AC 100-240V	DC 12V	AC 100-240V
Bandwidth	32Gbps	32Gbps	48Gbps
VLAN	√	/	√
250m Extend	√	/	√
Surge Protection	/	√	/
Product Size(mm)	220*161*44mm	240*102*30mm	270*180*45mm

10/100/1000M Ethernet Switch



			
Model	HR-SWG10242S	HR-SWG10240	HR-SWG10482S
Port Rate	24*GE + 2*1G SFP	24*GE	48*GE + 2*1G SFP
Power Input	AC 100-240V	AC 100-240V	AC 100-240V
Bandwidth	52Gbps	48Gbps	100Gbps
VLAN	√	√	√
250m Extend	√	√	/
Surge Protection	2KV	/	2KV
Product Size(mm)	440*205*44mm	440*205*44mm	440*205*44mm